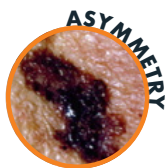


# THE ABCDEs OF MELANOMA



One half of the mole does not match the other side.

.....



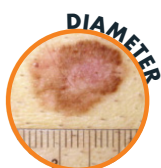
Irregular, scalloped or poorly defined border.

.....



Varied from one area to another; shades of tan & brown, black, white, red or blue.

.....



Diameter is larger than a pencil's eraser, usually 6mm.

.....



Changes in size, shape or color, or begins to bleed or scab.

\*American Academy of Dermatology



OGDENCLINIC  
DERMATOLOGY